

# SMARTBAFFLE

BY DCI



## The Bigger Better Insulation Baffle



- Strongest & Smartest Insulation Baffle
- Perfect with Spray Foam or Fiberglass
  - Ventilates Entire Rafter Bay Width
  - Installs From Rooftop or Attic Area
    - Will Not Crush, Tear or Break

1-800-622-4455  
WWW.DCIPRODUCTS.COM



# *SmartBaffle by DCI*

## *(Full Rafter Width, Rigid Insulation Baffle)*

**Description:** The **SmartBaffle** is designed to fit snugly between 16" & 24" on center rafters. **SmartBaffle 16** is 18.5"W x 36"L x 1/8" (thick), **SmartBaffle 24** is 26.5"W x 36"L x 1/8" (thick) corrugated plastic with double bending routes at 2" in from each long edge. Each piece can be cut in half (18") for double coverage at the eave. **SmartBaffle** is designed for use with any insulation material. **SmartBaffle** will support spray foam, loose fill, and fiberglass insulation materials.

**SmartBaffle** is also designed for rugged, unbreakable use and handling. **SmartBaffle** is constructed of non-collapsing material with lifetime durability. Ease of installation by the contractor is achieved by the design, engineering and technology inherent in the baffle product itself. There are many ways to secure the **SmartBaffle** to the rafters but the universal method is to use 8d nails at the center of each side and additional 8d nails 3" in from each end and nailed at least 1" deep into the rafter with a minimum of 6 nails per baffle (3 each side). The nails are placed tight against the **SmartBaffle**, against the lower outer surface and pressure 'tacked' in place securely, only driving the nail enough to hold the **SmartBaffle** in place. Continue until the desired amount of **SmartBaffle** is installed and then follow up installing the insulation. Insulation should fit loosely in the remaining rafter space to gain the maximum 'R' value (winter) and 'U' value (summer).

**SmartBaffle** is designed to allow 2" of air flow between rafters. Wider or narrower rafter spaces can be accomplished by following the directions enclosed with the product. Insulation eave protection can be achieved by cutting up from the side flange and bending the chute down at a vertical angle to fit tight against the top wall plate. Nail the side flange to hold in place.

---

## **SmartBaffle 16 & 24 Specifications:**

<b>MODEL NUMBER:</b>	(SB16) SmartBaffle 16 used for 16" rafter spacing (SB24) SmartBaffle 24 used for 24" rafter spacing
<b>PRODUCT DIMENSIONS:</b>	(SB16) 18.5" Wide x 36" Long x 1/8" Thick (SB24) 26.5" Wide x 36" Long x 1/8" Thick
<b>MINIMUM ORDER:</b>	1 Box (SB16 - 36 Pieces, SB24 - 30 Pieces)
<b>TERMS:</b>	Net 30
<b>TOTAL BOX QUANTITY:</b>	SmartBaffle 16 - 36 Pieces, SmartBaffle 24 - 30 Pieces
<b>TOTAL SKID QUANTITY:</b>	SB 16 - 20 Boxes or 720 Pieces, SB24 - 24 Boxes or 720 Pieces
<b>TOTAL BOX WEIGHT:</b>	(SB16) - 32 lbs. per box • (SB24) - 38 lbs. per box
<b>INDIVIDUAL BOX DIMENSIONS:</b>	(SB16) 7" High x 19" Wide x 38" Long (SB24) 6" High x 27" Wide x 38" Long
<b>PALLET WEIGHTS &amp; SIZES:</b>	SB16 - 640 lbs. (Plus Skid) 38" Long x 38" Wide x 72" High SB24 - 912 lbs. (Plus Skid) 54" Long x 38" Wide x 72" High
<b>INCLUDED ITEMS:</b>	Installation Instructions
<b>RETURN POLICY:</b>	<b>30 DAYS UNCONDITIONAL MONEY BACK GUARANTEE.</b> Unopened boxed products can be returned to stock within 30 days of purchase. Call first for approval. That which cannot be restocked is to be returned to DCI Products with invoice and reason for return. Upon receipt of those items DCI may replace or refund the amount of the returned merchandise after DCI approval. Only full cartons of each product may be returned in the original box tightly sealed to our location at customer's expense.
<b>DCI Products</b> 415 S. Penn Street Clifton Heights, PA 19018 Phone: 610-622-4455 Fax: 888-356-3291 www.dciproducts.com	

---

---

# SmartBaffle by DCI

## Installation instructions for SmartBaffle 16 & SmartBaffle 24

(SmartBaffle is available for 16" or 24" rafter spaces, respectively)

It is important to follow each step within these instructions for proper installation of the SmartBaffle product. If you need assistance with this product installation, please call DCI Products Monday through Friday 8am- 5 pm est.

Our toll free number is 800-622-4455 or contact us via email [info@dciproducts.com](mailto:info@dciproducts.com)



---

---

**Use 1/2" Staples, or 1" Screws or 1 1/4" Roofing Nails to attach baffles to side rafters.**

---

---

**1-** To install the SmartBaffle simply bend up the 2" side flanges with the routed flange grooves facing the insulation. Insert the flanges into the rafter space ensuring that they rest against or near the underside of the roof decking. The flanges will automatically leave a 2" air space between the roof deck and the lower panel of the SmartBaffle. Slide the SmartBaffle down towards the fascia board to about 3" short of the inner side of the fascia board. This allows room for air flow from under the soffit. SmartBaffle is also designed to be used with SmartVent intake ventilation ([www.dciproducts.com](http://www.dciproducts.com)). Use a standard utility knife to custom cut the SmartBaffle to fit rafters, ridges and wall plates to seal for wind. The side flanges also work as nailing tabs from the rooftop or attic area. **Use a minimum of 3 fasteners per side flange to attach.** Other installation methods are attached #1 through #5.

**2-** The SmartBaffle (Fig. 5) installs using 8d nails placed proximate to the middle of the baffle on each side to hold it in place, tight to the roof deck, while 2 additional nails are placed on each side about 3" in from the end of the baffle (minimum 3 nails per side) ensuring the flanges are tight to the roof deck and nailed as shown in fig.5. Seams can be 1) butted together, or 2) notched 1" and overlapped 1" or 3) leave a 1/4" to 1/2" space between baffles if using a batted or rigid, fibrous insulation for moisture abatement into the 2" air channel. For spray foam, butted joints are recommended with duct tape centered over joint to seal from spray foam expansion. (Any questions please call DCI at 610-622-4455). Install as many baffles as needed in each rafter bay ensuring a clear path from air intake to air exhaust. (Use a minimum of 3 fasteners for securing each side of the baffle to the rafter).

**3-** To create a smaller size SmartBaffle for narrow rafter spaces, simply cut the one long side, about 3 1/2" wider than the width of the rafter space. Next, use a utility knife to cut "half way through" a mark made 2" in from the SmartBaffle cut off edge. This will create a flange that bends up towards the roof deck. You may practice this cut on a scrap piece of baffle material prior to working on the installed SmartBaffle to become familiar with the "half way through" cut. Another way is discussed in step #4.

**4-** Things to remember: ensure insulation is not inside the 2" air chute created between the roof deck and the SmartBaffle. Install SmartBaffle in all rafter spaces that have soffit intake air flow that may be blocked by insulation. Use a utility knife to make cuts. Larger size spaces can follow the next directions in step #5. Tip: To create a smaller baffle, cut the SmartBaffle long ways 1/2" less than the width of the rafter space (allowing for the flanges bending up). Once separated, overlap at the cut edges creating the size required including the flange allowances (Flange allowance is 4"). Screw the overlapped long edges together using eight 1" long screws (max.) pointed towards the roof deck for safety purposes. Using this method the space between the routes in the SmartBaffle would be the space between the narrow rafter space.

**5-** To create a larger SmartBaffle (Fig. 2) simply screw two flat SmartBaffles together with maximum length 1" screws (eight screws with screw points toward the roof deck when installed) ensuring the width is 4" wider than the rafter space (this allows for the 2" flanges). Then install per the above directions. Below is a sketch of the SmartBaffle installation inside a rafter space.

---

Please contact us if you would like more information regarding the various applications, usage, product safety or warranty

DCI Products 415 South Penn Street Clifton Heights PA 19018  
[www.dciproducts.com](http://www.dciproducts.com) • 800.622.4455 • [info@dciproducts.com](mailto:info@dciproducts.com)

Rev. 202409

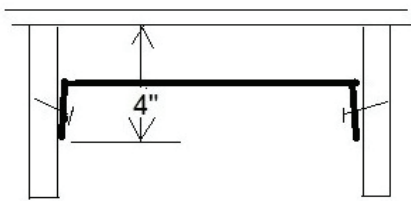
# SmartBaffle by DCI

## Installation instructions for SmartBaffle 16 & SmartBaffle 24

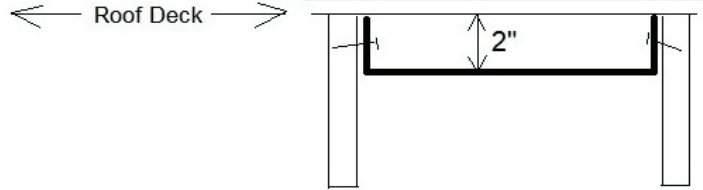
Use 1/2" Staples, or 1" Screws or 1 1/4" Roofing Nails to attach baffles to side rafters.

### Different Installation Methods For Installing SmartBaffle

#1 **Attic Side Installation** Measuring Down 4" From Roof Deck to Bottom of 2" Flange

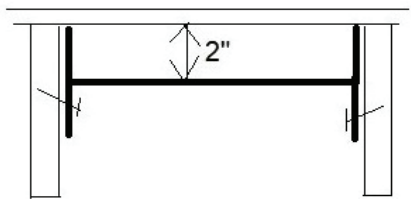


#2 **Roof Top Installation** with Plywood Installed After SmartBaffle.

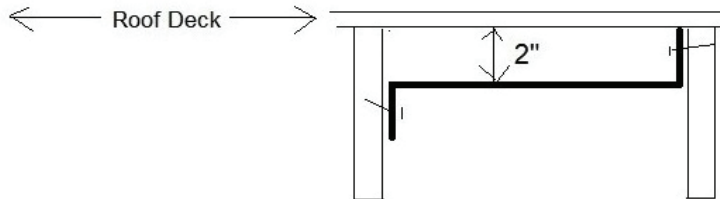


Use a minimum of 3 fasteners per side flange to attach.

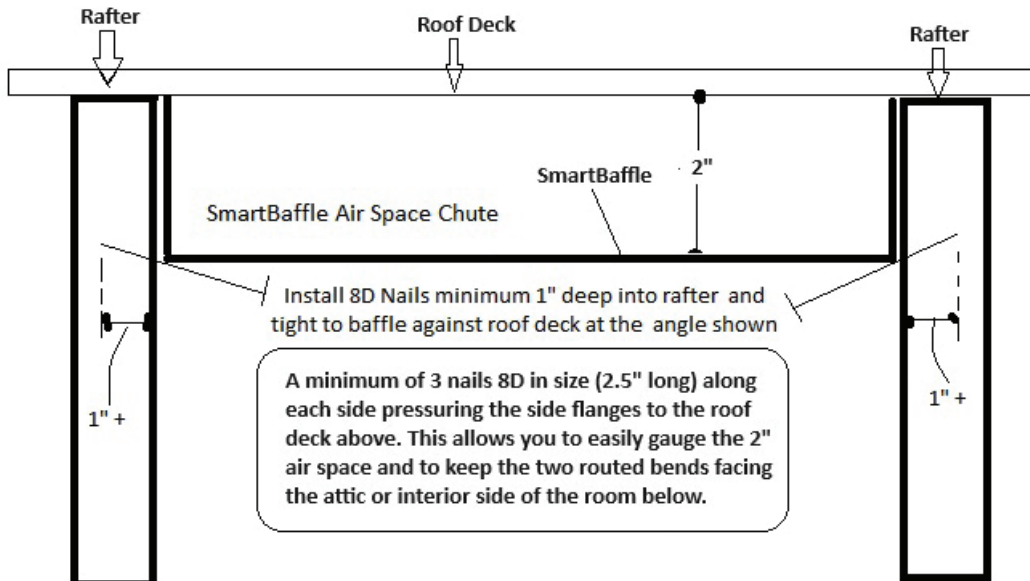
#3 **Attic Side Installation** Cut 2" Flange 1.5" in From End of Baffle Length and Bend Down to Secure Nail. Slide Next Baffle Inside and Repeat.



#4 **Attic Side Installation** Nail right Flange Against Roof Deck. Then Reverse Flange on Left Side Nailing Horizontal to Roof Deck as Shown.



#5 **Attic Side Installation**- Install flanges towards the roof deck and use minimum 8D common nails or similar nailed at least 1" or more into the rafter to pressure fit the baffle against the roof deck tightly, similar angle as shown. See directions below.

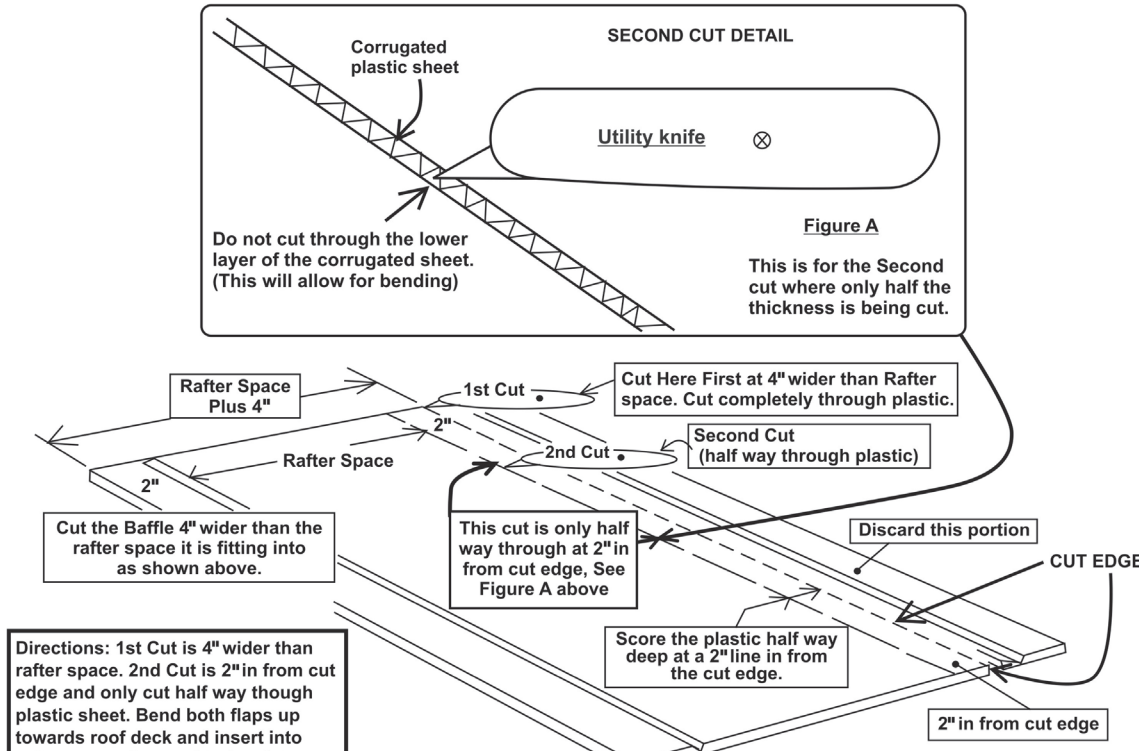


# SmartBaffle by DCI

## Installation instructions for SmartBaffle 16 & SmartBaffle 24

Use 1/2" Staples, or 1" Screws or 1 1/4" Roofing Nails to attach baffles to side rafters.

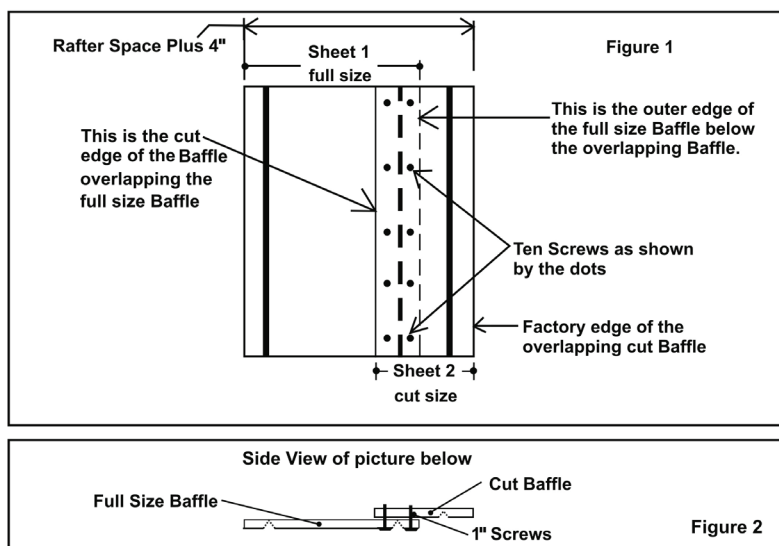
### DIRECTIONS FOR CUTTING A SMALLER SMARTBAFFLE



### DIRECTIONS FOR MAKING A WIDER SMARTBAFFLE

Note: SmartBaffle is available for 16" rafter (SmartBaffle 16) and for 24" rafters (SmartBaffle 24)

Manufactured by DCI Products



#### DIRECTIONS TO MAKE A WIDER BAFFLE:

Fig. 1- overlap a portion (half sheet length h wise) on top of a full sheet of SmartBaffle. Attach 10 screws 1" long connecting the sheets together. The overall SmartBaffle width size should be 4" wider than the rafter space it will be used in. Once attached bend up the outer 2" flaps so they form a 90 degree bend. Insert into rafter space. Continue with as many as needed ensuring the space distance is the same.

Fig. 2 - a cross section of Fig. 1 showing the overlay of the cut piece above the full SmartBaffle and screws for attachment.